

\$279,000 - 2080 Summit Drive Unit# 412, Panorama

MLS® #10335030

\$279,000

0 Bedroom, 1.00 Bathroom, 505 sqft

Recreational on 1.00 Acres

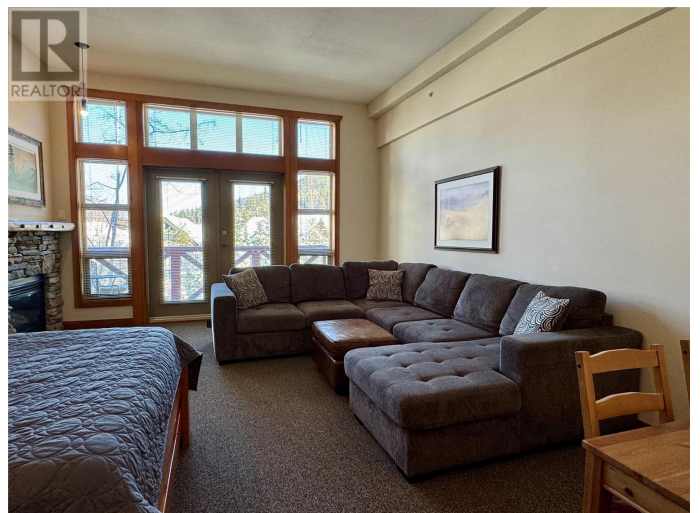
Panorama Springs, Panorama, British Columbia

Welcome to 412 Springs at Panorama Mountain Resort! Enjoy the prime location of this ski-in ski-out studio condo. One of the larger floor plans with vaulted ceilings AND a patio with stunning views. This unit has been lightly updated and is being sold fully furnished, so you can enjoy a hassle free transition. Enjoy the year-round appeal of Panorama Mountain Resort, whether you're skiing in the winter or exploring the mountain trails during the warmer months. This condo is not just a home; it's a gateway to the ultimate mountain lifestyle. Don't miss the opportunity to make this condo your own and experience the best that Panorama Mountain Resort has to offer. Contact your agent today to schedule a viewing or with any questions! (id:36535)

Built in 2000

Essential Information

| | |
|----------------|-------------------|
| Listing # | 10335030 |
| Price | \$279,000 |
| Bathrooms | 1.00 |
| Square Footage | 505 |
| Acres | 1.00 |
| Year Built | 2000 |
| Type | Recreational |
| Sub-Type | Strata |
| Style | Split level entry |



Community Information

Address 2080 Summit Drive Unit# 412
Subdivision Panorama Springs
City Panorama
State British Columbia
Zip Code V0A1T0

Amenities

Parking Spaces 2
Parking Parkade
View Mountain view, Valley view, View (panoramic)
Has Pool Yes
Pool Inground pool, Outdoor pool, Pool

Interior

Appliances Refrigerator, Dishwasher, Microwave, Oven, Hood Fan
Heating See remarks
of Stories 1

Exterior

Roof Asphalt shingle

Additional Information

Zoning Unknown

Listing Details

Listing Office Courtesy Of Alicia Balawyder Of RE/MAX Invermere

MLS®, REALTOR®, and the associated logos are trademarks of The Canadian Real Estate Association.