

\$544,000 - 2215 Westside Park Avenue, Invermere

MLS® #10339561

\$544,000

3 Bedroom, 2.00 Bathroom, 2,074 sqft
Single Family on 0.07 Acres

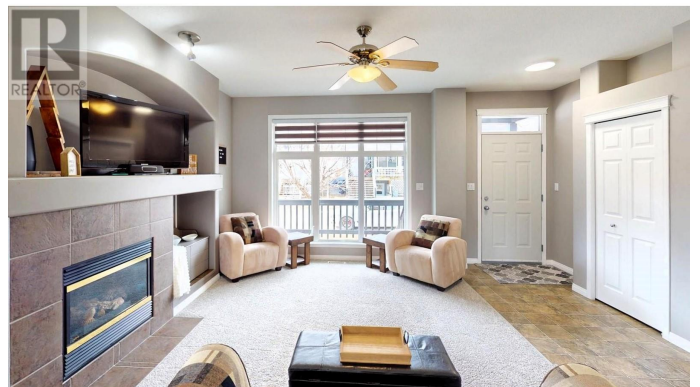
Invermere, Invermere, British Columbia

This delightful two-story home offers 3 bedrooms and 2.5 bathrooms, featuring 9' ceilings and spacious open-concept living areas. A cozy propane fireplace creates a warm and inviting atmosphere, while large windows showcase beautiful mountain views. The top-floor primary bedroom boasts its own breathtaking view, a walk-in closet, and a luxurious ensuite with both a tub and a walk-in shower. The finished basement, complete with a separate entrance, provides additional storage and recreational space, adding to the home's functionality. Situated on an end lot with no neighbors to the south, this property offers added privacy along with a fenced yard, completed landscaping, two parking spaces and a convenient storage shed. With direct access to the park and playground just across the lane, this home is ideally located in the sought-after Westside Park community. Close to parks and schools, it's perfect for families or anyone looking for a blend of comfort, convenience, and stunning surroundings in the heart of Invermere. Click on the 3D Showcase or Play Icon for a 3D Walkthrough. (id:36535)

Built in 2005

Essential Information

Listing #	10339561
Price	\$544,000



Bedrooms	3
Bathrooms	2.00
Half Baths	1
Square Footage	2,074
Acres	0.07
Year Built	2005
Type	Single Family
Sub-Type	Freehold

Community Information

Address	2215 Westside Park Avenue
Subdivision	Invermere
City	Invermere
State	British Columbia
Zip Code	V0A1K4

Amenities

Amenities	Golf Nearby, Park, Recreation, Schools, Shopping, Ski area
Features	Level lot, Corner Site, Two Balconies
Parking	Rear
View	Mountain view

Interior

Appliances	Refrigerator, Dishwasher, Dryer, Range - Electric, Washer
Heating	Electric Forced air, See remarks
Fireplace	Yes
Fireplaces	Gas
# of Stories	3

Exterior

Exterior	Stucco, Vinyl siding
Exterior Features	Landscaped, Level
Roof	Asphalt shingle

Additional Information

Zoning	Residential
--------	-------------

Listing Details

Listing Office	Courtesy Of Joseph Evanoff Of MaxWell Rockies Realty
----------------	--

MLS®, REALTOR®, and the associated logos are trademarks of The Canadian Real Estate Association.