

\$128,900 - Lot 18 Brewer Rise Ridge, Invermere

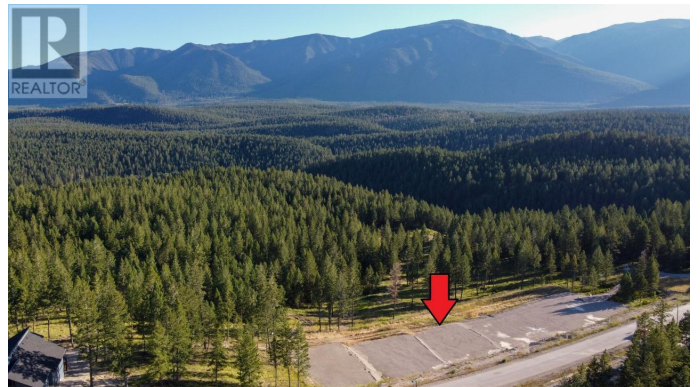
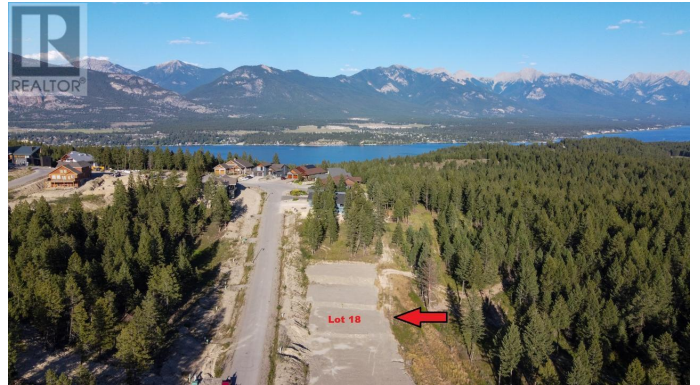
MLS® #2476786

\$128,900

0 Bedroom, 0.00 Bathroom,
Vacant Land on 0.24 Acres

Invermere, Invermere, British Columbia

South facing walkout with Big Views!!!
Welcome to Lot #18 in Phase 3 of Castlerock.
This beautiful and straightforward building lot
has incredible views of the Purcell Mountains.
With a full house plan available, the
topography is perfect for a bungalow with a
bright walkout basement. The views will be
incredible, and your future home will be
amazing! Phase 3 is the newest section of
Castlerock, located on the south end it is
bright and quiet and features the newest
homes in the area. With strong architectural
controls, the homes nearby are beautiful and
the neighbours are wonderful. The views are
awesome, the location is excellent, and with
no GST, the price is perfect! Jump on this one
while you can! (id:36535)



Essential Information

Listing #	2476786
Price	\$128,900
Bathrooms	0.00
Acres	0.24
Type	Vacant Land
Sub-Type	Freehold

Community Information

Address	Lot 18 Brewer Rise Ridge
Subdivision	Invermere
City	Invermere

State British Columbia
Zip Code V0A1K6

Amenities

Amenities Golf Nearby, Park, Recreation
Features Private setting
View Mountain view

Interior

Heating No heat

Additional Information

Zoning Unknown

Listing Details

Listing Office Courtesy Of DK Rice and RT Rice Of Royal LePage Rockies West

MLS®, REALTOR®, and the associated logos are trademarks of The Canadian Real Estate Association.